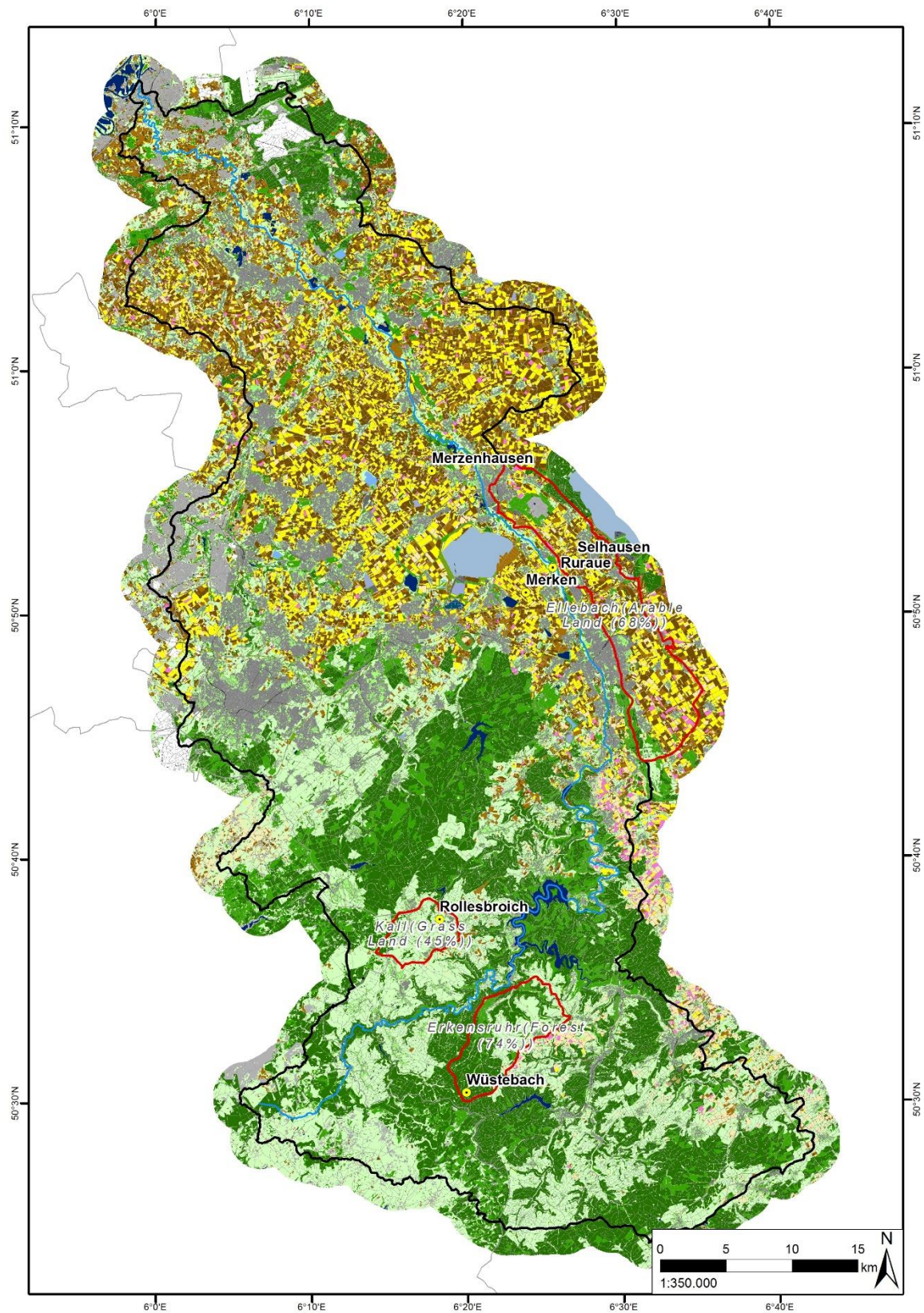


Documentation – Land Use Classification of the Rur Catchment 2011n (preliminary results)

	<p><u>Note:</u></p> <p>By downloading this dataset you accept adequate reference in case this data will be discussed or used in any publication or presentation. In this case please use the following citation:</p> <p>Lussem, Ulrike & Waldhoff, Guido (2013): Enhanced land use classification of 2011 for the Rur catchment, preliminary results. TR32DB. DOI: 10.5880/TR32DB.4</p>
Content	
files:	<p>data</p> <p>lu11_prelim.tif</p> <p>lu11_prelim.tfw</p> <p>lu11_prelim_ascii.txt [land use dataset as ascii file]</p> <p>lu11_prelim_ascii.prj</p> <p>documentation</p> <p>this file</p> <p>Read_Me.txt</p> <p>Legend_LU11n.txt</p>
data size:	6 MB (115 MB unzipped)
extend:	Rur Catchment
provider:	Z1 (G. Waldhoff)
language:	english
date of publication:	06/2013
date of purchase:	/
Description	
description:	<p>This data set contains the preliminary land use classification of 2011 for the study area of the CRC/Transregio 32: "Patterns in Soil-Vegetation-Atmosphere Systems: monitoring, modelling and data assimilation", which corresponds to the catchment of the river Rur. The study area is mainly situated in the western part of North Rhine-Westphalia (Germany) and parts of the Netherlands and Belgium, covering an area of approximately 2365 square kilometers.</p> <p>The land use classification is derived from supervised, multi temporal</p>

	<p>remote sensing data analysis using RapidEye. For the land use analysis datasets of the following acquisition dates were employed: May 21, May 30. Full coverage of the study area was not available for all acquisition dates.</p> <p>To enhance the information content of the land use data product, the Multi-Data Approach (MDA) was applied to combine the remote sensing derived land use information with additional data sets like the 'Authorative Topographic-Cartographic Information System' (ATKIS Basic-DLM, AAA schema) and 'Physical Block' information. The methodology of the MDA is described in more detail in Waldhoff & Bareth (2008) and in Waldhoff et al. (2012).</p> <p>The classification is provided in GeoTIFF and in ASCII format. Spatial resolution: 15 m; Projection: WGS84, UTM Zone 32N.</p> <p>References:</p> <p>Waldhoff, G. & Bareth, G. (2008): GIS- and RS-based land use and land cover analysis: case study Rur-Watershed, Germany. - Proc. SPIE 7146, Geoinformatics 2008 and Joint Conference on GIS and Built Environment: Advanced Spatial Data Models and Analyses, 714626 (November 10, 2008); doi:10.1117/12.813171.</p> <p>Waldhoff, G., Curdt, C., Hoffmeister, D. & Bareth, G. (2012): Analysis of multitemporal and multisensor remote sensing data for crop rotation mapping. - ISPRS Ann. Photogramm. Remote Sens. Spatial Inf. Sci., I-7, 177-182, doi:10.5194/isprsannals-I-7-177-2012.</p> <p>Acknowledgements:</p> <p>We thank the German Aerospace Center (DLR) for the provision of data from the RapidEye Science Archive and Geobasis.NRW for the provision of the ATKIS-Basic-DLM.</p>
abbreviations used in data:	/

Example



Coverage of the preliminary Land Use Classification 2011n

Author

G. Waldhoff (Z1)